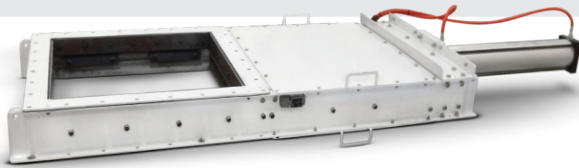


# GATES, VALVES AND DIVERTERS

MAXIMIZE EFFICIENCY & ADD CONTROL OVER FLOW OF BULK MATERIALS

All CDM slide gates, valves and diverters provide useful solutions for any heavy-duty application that requires adjustable material flow and easy maintenance. Customize each product to suit your specific process and plant requirements.

## GATES



## DIVERTERS



### MATERIAL TYPES

MILD  
CARBON  
STEEL

ABRASION  
RESISTANT  
STEEL

STAINLESS  
STEEL

### POWER OPTIONS



Manual



Electrical



Hydraulic



Pneumatic

### GATES

### VERSATILITY

### DIVERTERS

#### Open

Perfect for free flowing of materials

#### Closed

Reduces unplanned downtime by stopping flow temporarily to allow maintenance

#### Adjustable

Controls flow of materials and assures more accurate metering

#### Actuating Blade

Typical for granules and powders

#### Basket/Pan

Allows control to either or both legs of the diverter

Completely sealed to contain dust/minimize waste

Both A-Style and K-Style

## DID YOU KNOW CDM GATES, VALVES AND DIVERTERS ARE ...

- Made in a way to make maintenance simple and cost effective
- Custom-built to meet your exact specifications.
- Battle-tested to handle temperatures up to 700°F (371°C).
- Part of the reason CDM has a 96% customer satisfaction rate.

# GATES

# DIVERTERS

### Biomass

Hog fuel, ash handling, fuel handling



### Biomass

Added control over flow of boiler feed and ash

### Cement

Limestone, clinker, ash handling



### Cement

Able to handle abrasive materials and help in calcination process

### Fertilizer

Potash, bottom ash



### Fertilizer

Offers more control over the flow of fertilizer in non-stop facilities

### Glass

Sand, soda ash, limestone



### Glass

Control flow of sand, soda ash, limestone through multiple discharge points

### Pulp and Paper

Hog fuel, ash recovery, bottom ash



### Pulp and Paper

Ease flow of ash getting pumped out of hog fuel boiler

### Mining

Limestone, clinker, coal ash



### Mining

Able to keep flow of coal ash under control with multiple outlets

## AVOID BIGGEST OBSTACLES



### Lost production

In industries reliant on high volumes, loss of any production can be detrimental. CDM gates, valves and diverters ensure the product movement is smooth and efficient.



### Wasted labor

Waiting on faulty equipment to be fixed means wasted time for employees, who may be inactive until the equipment is repaired. Reliable gates, valves and diverters from CDM ensure labor costs are maximizing production.



### Divided attention

Downed equipment drives attention away from needs elsewhere in the facility. Reliable gates, valves and diverters from CDM allows attention to other tasks around the site.

## VALVES

### Configurations

Available in single- and dual-acting configurations. CDM valves work best as simple open/closed valves.

### Materials choice

Choice of construction materials ensures the design and functionality suit each specific application.

### Cost-effective

Common for loadout to truck or railcar, as well as under bins and silos. CDM valves are a cost-effective alternative to larger rectangular slide gates.

### Easily Adaptable

CDM valves adapt easily to various pieces of equipment. This creates unrestricted flow of product when sealing to downstream equipment isn't required.

### Versatile

CDM valves can be provided with electric linear actuators or hydraulic/pneumatic cylinders with transducers to provide modulating capabilities, as well as a regulated or metered feed.

## CONTACT US TODAY

to request a quote for a gate, valve and diverter built with the industry's most rugged, reliable components.

### CDM Systems, Inc.

19230 Evans St. NW, Suite 202,  
Elk River, MN 55330

Phone: 763-428-9700

Fax: 763-428-9701

Email: sales@cdmsys.com

WWW.CDMSYS.COM

**CDM** Systems, Inc.  
Global company